

KEY

- Proposed Turbine Location
- 10km Radii
- 20km Local Study Area
- Settlement
- Primary Road
- A Road
- B Road
- Minor Road
- Railway
- National Cycle Network
- Cape Wrath Way Walking Route
- Core Path
- Visit Scotland Scenic Route

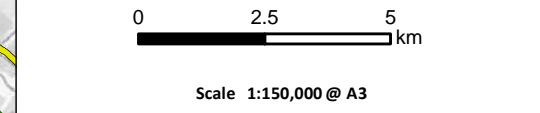
1 - North Coast 500
3 - Moray Firth Route

Blade Tip ZTV

No. of Blade Tips Theoretically Visible

- 1
- 2
- 3
- 4

Blade tip:	135m	Observer height:	1.5m
DTM:	OS Terrain 5 DTM		
DTM resolution:	10m		
Surface features:	Excluded	Earth curvature:	Included



Strath Tiry Wind Farm
EIA Report

Figure 6.12b
**Principal Visual Receptors with
Blade Tip ZTV (20km)**

Date: 29/10/2020	Drawn by: LA	Checked by: AW	Version: V1
------------------	--------------	----------------	-------------

Project Number: 3225