

KEY

- Proposed Turbine Location
- 10km Radii
- 20km Local Study Area

Blade Tip ZTV

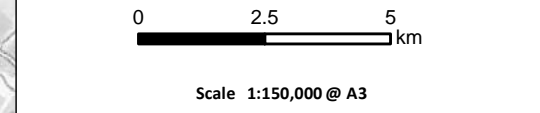
No. of Blade Tips Theoretically Visible

- 1
- 2
- 3
- 4

Viewpoint Location

- 1 - A836 bird hide layby
- 2 - A836 at Allt Chaiseagail Bridge
- 3 - A836 south of Dalmichy
- 4 - A836 north of Dalnessie entrance
- 5 - A836 north of Rhian Bridge
- 6 - A836 south of Crask
- 7 - Blarbuie
- 8 - Tirryside
- 9 - Saval
- 10 - Rhian Breck, Lairg
- 11 - Sallachy
- 12 - Meall Dola
- 13 - Track to Loch Sgeireach
- 14 - Creag Mhor
- 15 - Ben Klibreck
- 17 - Cnoc an Alaskie
- 18 - Ben Hee
- 19 - Moavally
- 20 - The Ord

Blade tip:	135m	Observer height:	1.5m
DTM:	OS Terrain 5 DTM		
DTM resolution:	10m		
Surface features:	Excluded	Earth curvature:	Included



Strath Tiry Wind Farm
EIA Report

Figure 6.7b

Blade Tip ZTV with Viewpoints (20km)

Date:	07/10/2020	Drawn by:	LA	Checked by:	AW	Version:	V1
-------	------------	-----------	----	-------------	----	----------	----